



• With the most popular wireless protocols and sensors WiFi / Bluetooth / ZigBee / EnOcean and 19 sensors with complete tutorial

IOT-100 adopts 4 different wireless protocols: ZigBee, Bluetooth, WiFi, and EnOcean. Users can select one (or more) wireless sensing technology and transmit data to wireless integrated gateway via MQTT protocol for observation and control.

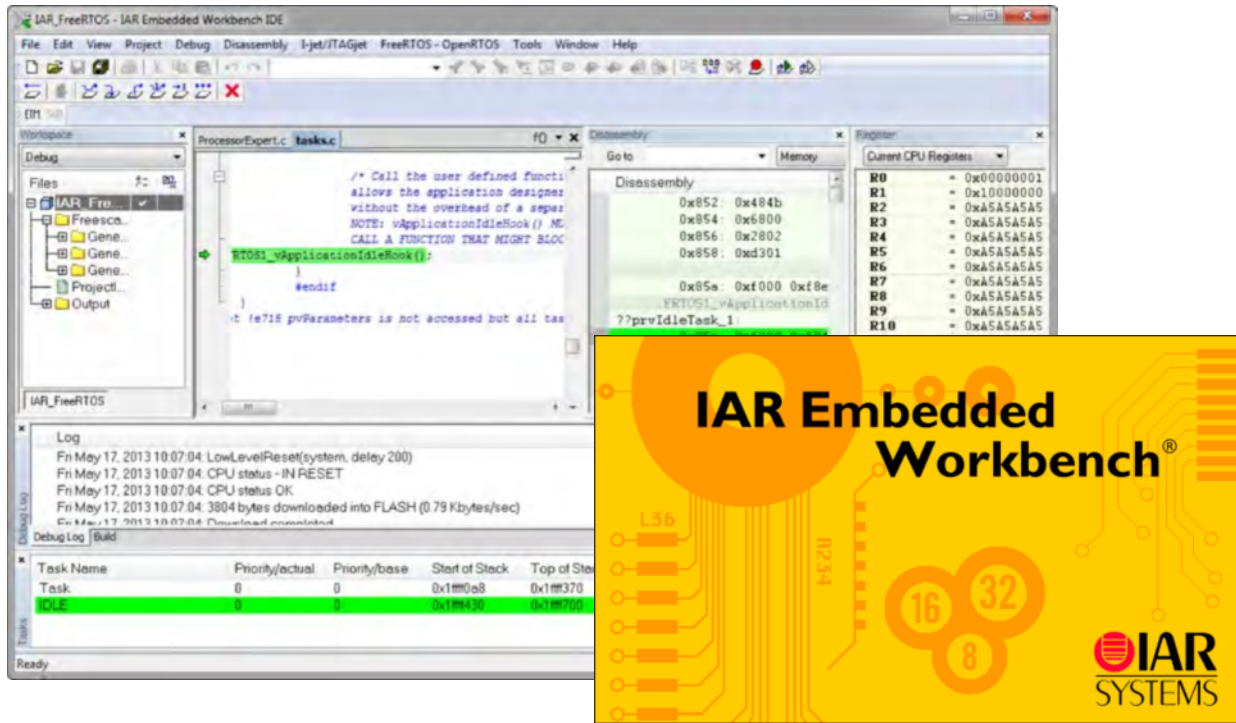


• The Simplified Learning Topology

Internet of Things



- IoT Control Technology



IAR Embedded Workbench is a software that offers development tools for embedded systems.

- IOT-100 Integrates ITS-200 IPv6 Experimental Equipment

In order to allow users to know more about IoT network technology and communication protocols, IOT-100 integrates ITS-200 IPv6 experimental equipment for users to construct and simulate Internet or Intranet environment via ITS-200 router devices to achieve information transmission in IoT.



K&H MFG. CO., LTD.

5F, No. 8, Sec. 4 Tzu-Chiang Rd., San Chung City 241,
Taipei Hsien, Taiwan R.O.C.

<http://www.kandh.com.tw> E-Mail: education@kandh.com.tw

Fax: 886-2-2287-3066, 2287-9704 Tel: 886-2-2286-0700, 2286-7786

RAPAS kft

1184 Budapest Üllői út 315.

Tel: 06 1 294 2900 Email: rapaskft@digikabel.hu Internet:

www.oktatasi-eszkoz.hu